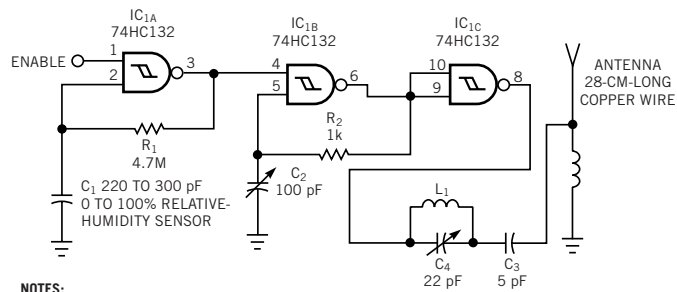


Figure 1



NOTES:
L₁ IS SIX TURNS OF 22-GAUGE WIRE WITH 5-MM DIAMETER.
L₂ IS 18 TURNS OF 22-GAUGE WIRE WITH 5-MM INNER DIAMETER.

This percentage-relative-humidity transmitter uses 10- to 50-MHz, tunable RF, and 1- to 2-kHz on/off amplitude modulation.