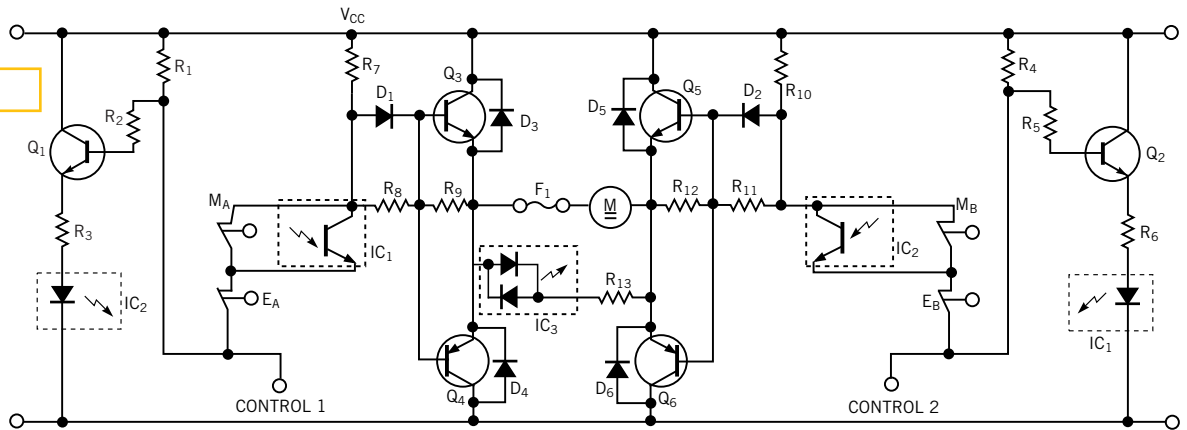


**Figure 1**



**NOTES:**

D<sub>1</sub>, D<sub>2</sub>: 1N4148  
 D<sub>3</sub> TO D<sub>6</sub>: 1N4937  
 R<sub>1</sub>, R<sub>2</sub>, R<sub>4</sub>, R<sub>5</sub>, R<sub>9</sub>, R<sub>12</sub>: 10 kΩ, 0.25W  
 R<sub>7</sub>, R<sub>8</sub>, R<sub>10</sub>, R<sub>11</sub>: 3.3 kΩ, 0.25W  
 R<sub>3</sub>, R<sub>6</sub>, R<sub>13</sub>: 1.5 kΩ, 0.6W

Q<sub>1</sub>, Q<sub>2</sub>: 2N2222, 2N3904...  
 Q<sub>3</sub>, Q<sub>5</sub>: BDX33C  
 Q<sub>4</sub>, Q<sub>6</sub>: BDX34C  
 IC<sub>1</sub> TO IC<sub>3</sub>: PC814, H11AA1, SFH6206-2...

**This simple circuit provides four-position motor control with two inputs.**