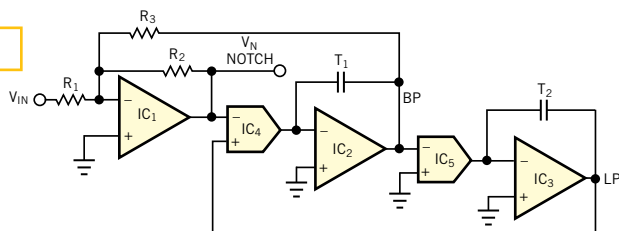


Figure 2



NOTE: $R_1 = R_2$, AND $-\frac{V_N}{V_{IN}} = \frac{1 + s^2 T_1 T_2}{1 + \frac{R_1}{R_3} s T_2 + s^2 T_1 T_2}$.

Replacing two resistors by multiplier ICs results in a tunable notch filter.