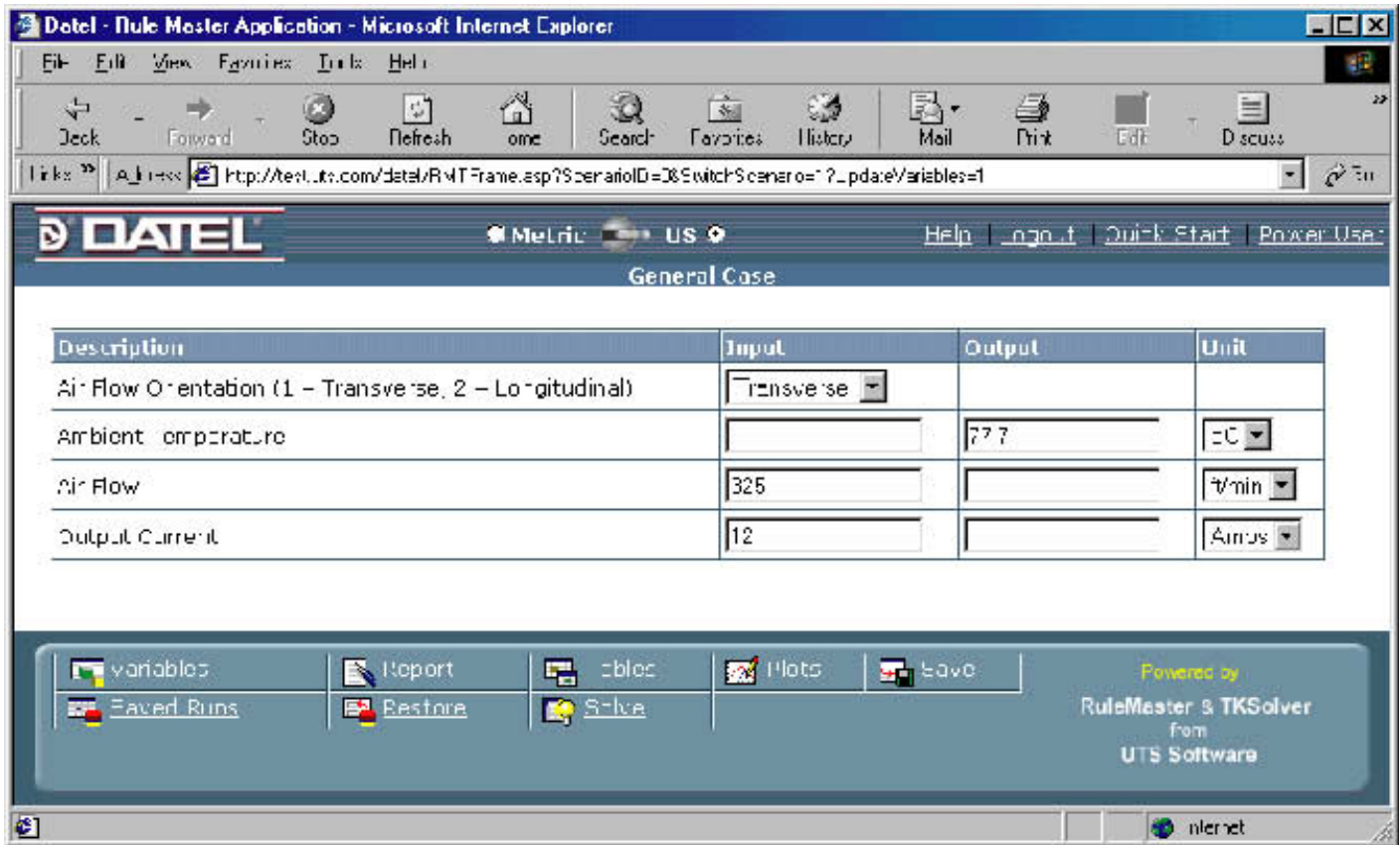


Figure A



The selected dc/dc converter operates reliably in air as hot as 77.7°C if you cool the converter with air traveling longitudinally at 325 ft/min and draw 12A from its output.

Follow these steps to try out the Datel and CGI applications:

1. Go to www.uts.com;
2. Click on Development Services;
3. Select Sizing and Sales Configurators; and
4. Click on Examples.

To access the Datel application, log in as *EDN* and enter the password *tksolver*. The CGI application requires no registration.