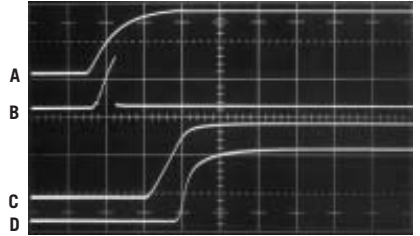
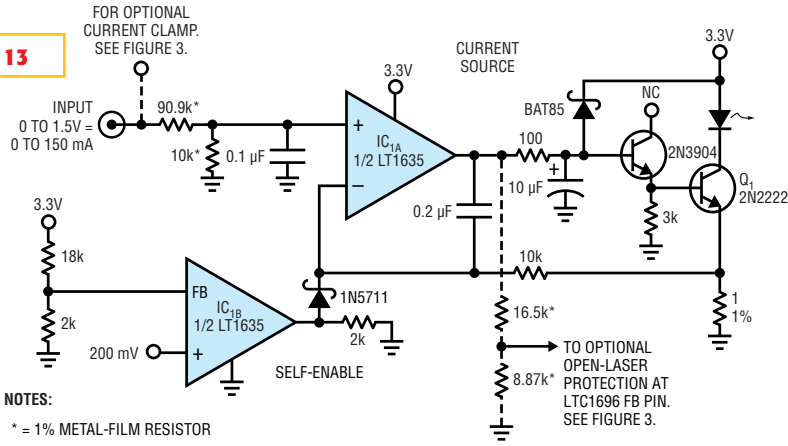


**Figure 13**



20 μSEC/DIV

TRACE	DESCRIPTION	SCALE
A	POWER-SUPPLY VOLTAGE	2V/DIV
B	COMPARATOR OUTPUT	1V/DIV
C	Q <sub>1</sub> BASE	0.5V/DIV
D	OUTPUT CURRENT	50 mA/DIV

(a)

(b)

This circuit commits the laser's anode to the supply voltage and features inherent self-enabled operation (a). The output current is off until the supply voltage ramps past 2V, the self-enable comparator operates above 1.2V, and biasing at Q<sub>1</sub>'s base prevents outputs below 1.2V (b).