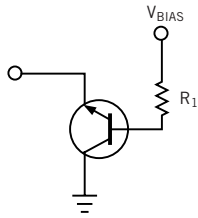
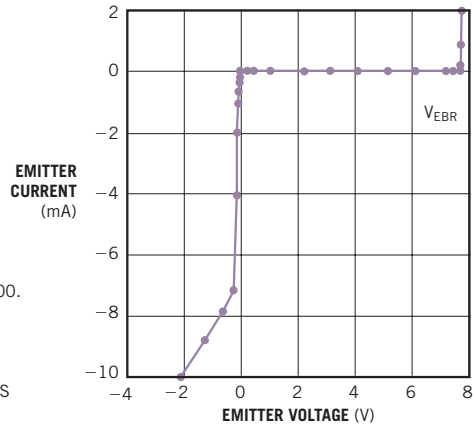


Figure 1



NOTES:
INVERTED BETA IS LESS THAN 1;
FORWARD BETA IS GREATER THAN 100.
MAXIMUM EMITTER VOLTAGE IS
LESS THAN $V_{EBR} + 0.6$.
USE I_B TO SET INVERTED
EMITTER CURRENT.
POSITIVE EMITTER VOLTAGE CAUSES
INVERTED OPERATION.
NEGATIVE EMITTER VOLTAGE
CAUSES FORWARD-OPERATION,
HIGH-CURRENT LOW-IMPEDANCE
CLAMP ACTION.

(a)



NOTE:
TRANSFER FUNCTION FOR 2N3904
WITH $40 \mu\text{A}$ BASE DRIVE.

(b)

The bipolar inverted clamp (a) has an excellent rectification characteristic (b) because of the 2N3904's large forward-beta-to-reverse-beta ratio.