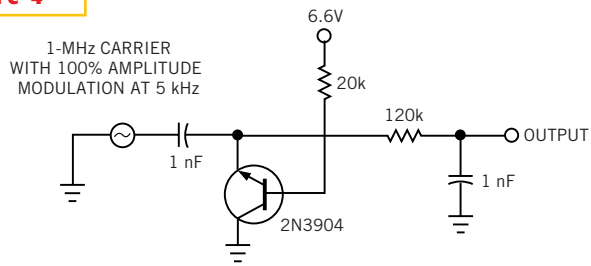


**Figure 4**



**NOTES:**

BASE-DRIVE CURRENT IS 300  $\mu$ A, EMITTER REVERSE CURRENT IS APPROXIMATELY 75  $\mu$ A.  
2N3904 FORWARD BETA IS GREATER THAN 100;  
REVERSE BETA IS APPROXIMATELY 0.25.  
EMITTER-BASE REVERSE-BREAKDOWN VOLTAGE IS GREATER THAN 6V.  
AC-DRIVE VOLTAGE IS LESS THAN 6.6V P-P.

**Using the inverted clamp as an AM demodulator requires a base current of 300  $\mu$ A to track the RF-modulation envelope.**