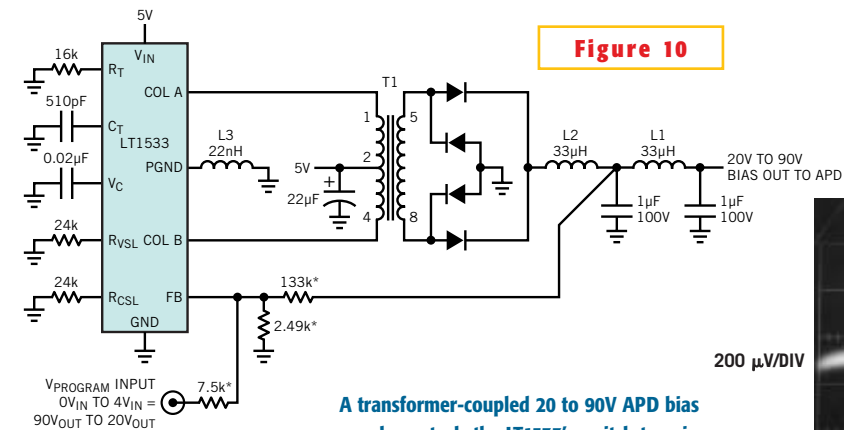


Figure 10

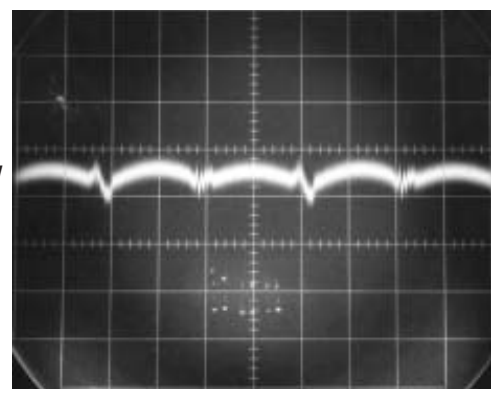


- NOTES: * = 1% METAL FILM RESISTOR
 1μF 100V = TECATE CMC100105MX1825
 L1, L2 = COOPER SD12-330
 L3 = COILCRAFT B07T
 T1 = COOPER CTX-02-16004
 → = BAV21

(a)

A transformer-coupled 20 to 90V APD bias supply controls the LT1533's switch-transition times to achieve spectacularly low output-harmonic residue (a). Switching-related noise is less than 100 μV, and fundamental ripple is approximately 200 μV over a measurement bandwidth of 100 MHz (b).

200 μV/DIV



(b)

2 μSEC/DIV