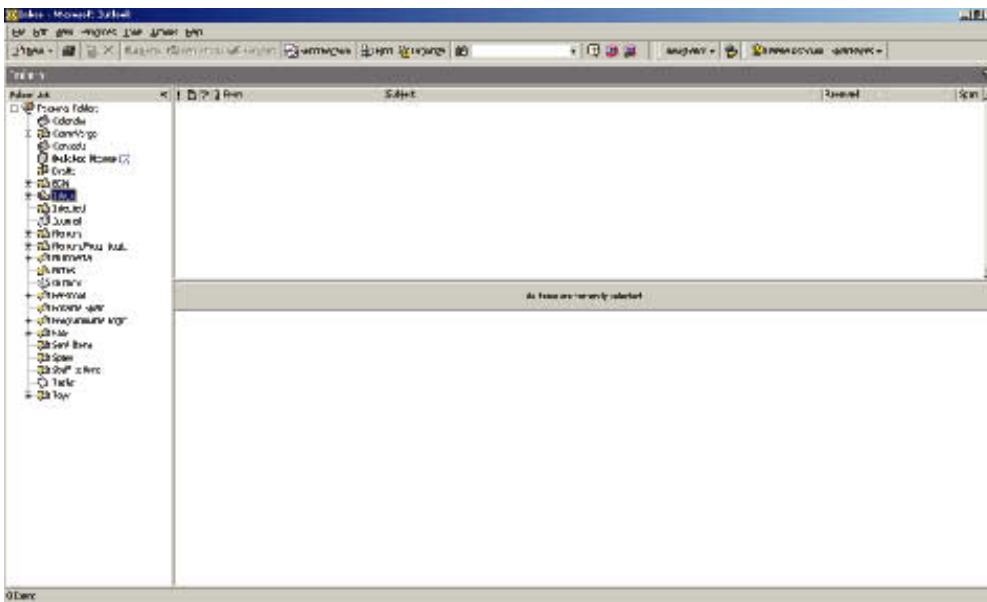
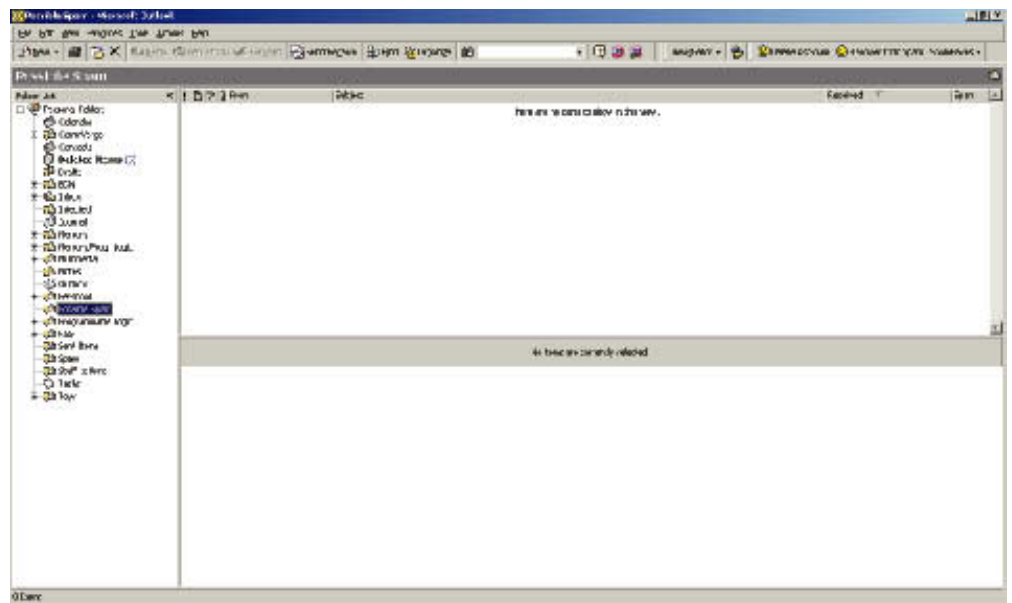


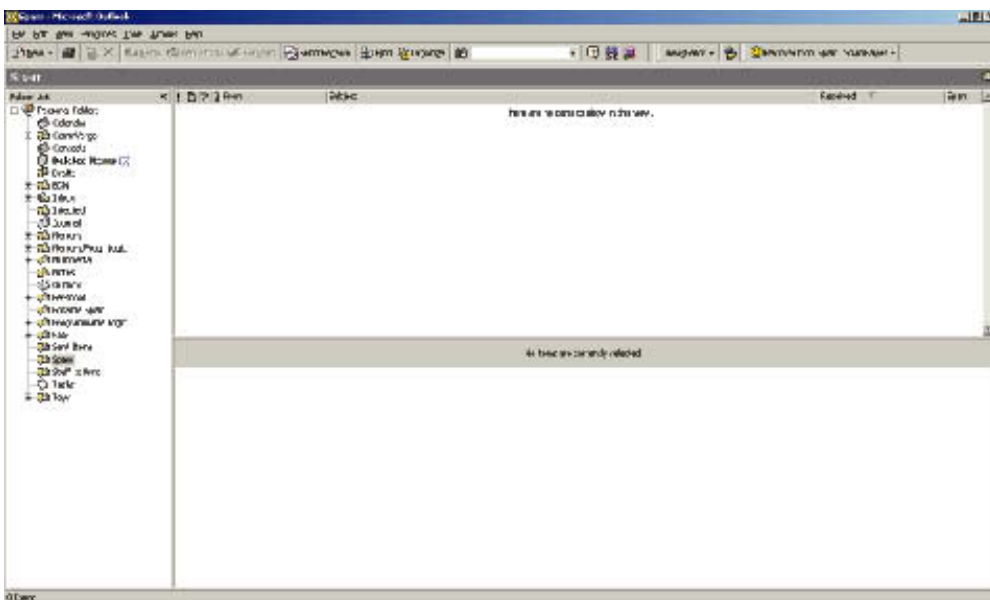
Figure 2



(a)



(b)



(c)

If spam makes it through SpamBayes, a single mouse-click moves it to the appropriate folder and trains the software to reduce the probability of a repeat occurrence (a, see upper right-hand corner). The software just as easily tags potential spam as “ham” or spam (b) and quickly corrects false positives should you ever encounter one; I haven’t (c).