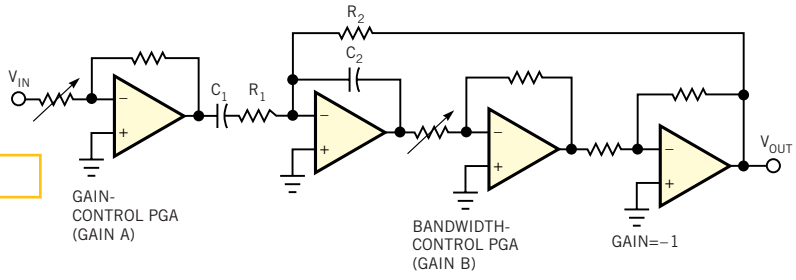


Figure 1



NOTES:

$$V_{OUT} = (\text{GAIN A})V_{IN}$$

$$\frac{1}{2\pi R_1 C_1} \leq \text{BANDWIDTH} \leq \frac{1}{2\pi \frac{R_2}{(\text{GAIN B})} C_2}$$

This ac-amplifier configuration offers both gain and bandwidth control.