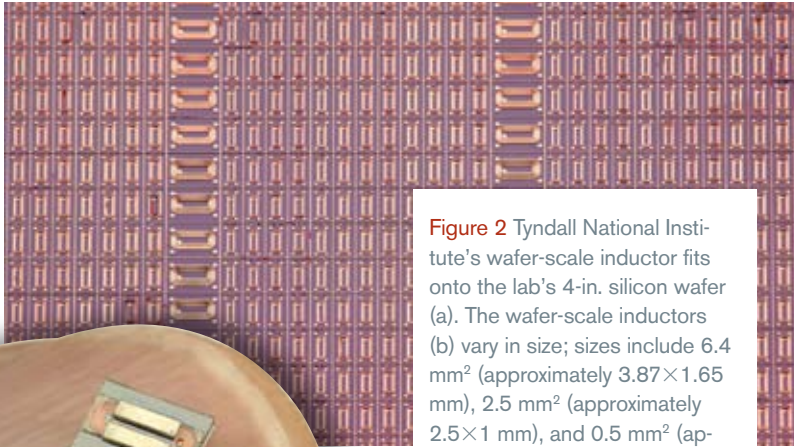
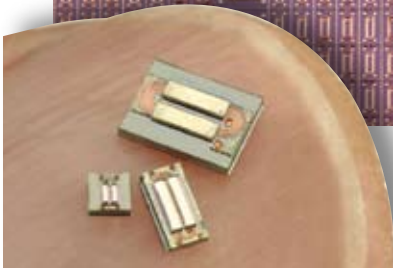


(a)



**Figure 2** Tyndall National Institute's wafer-scale inductor fits onto the lab's 4-in. silicon wafer (a). The wafer-scale inductors (b) vary in size; sizes include 6.4 mm<sup>2</sup> (approximately 3.87×1.65 mm), 2.5 mm<sup>2</sup> (approximately 2.5×1 mm), and 0.5 mm<sup>2</sup> (approximately 1×0.5 mm). The 2.5-mm<sup>2</sup> inductor has a 160-nH inductance and efficiency of 90% at 20 MHz and 0.2A.



(b)